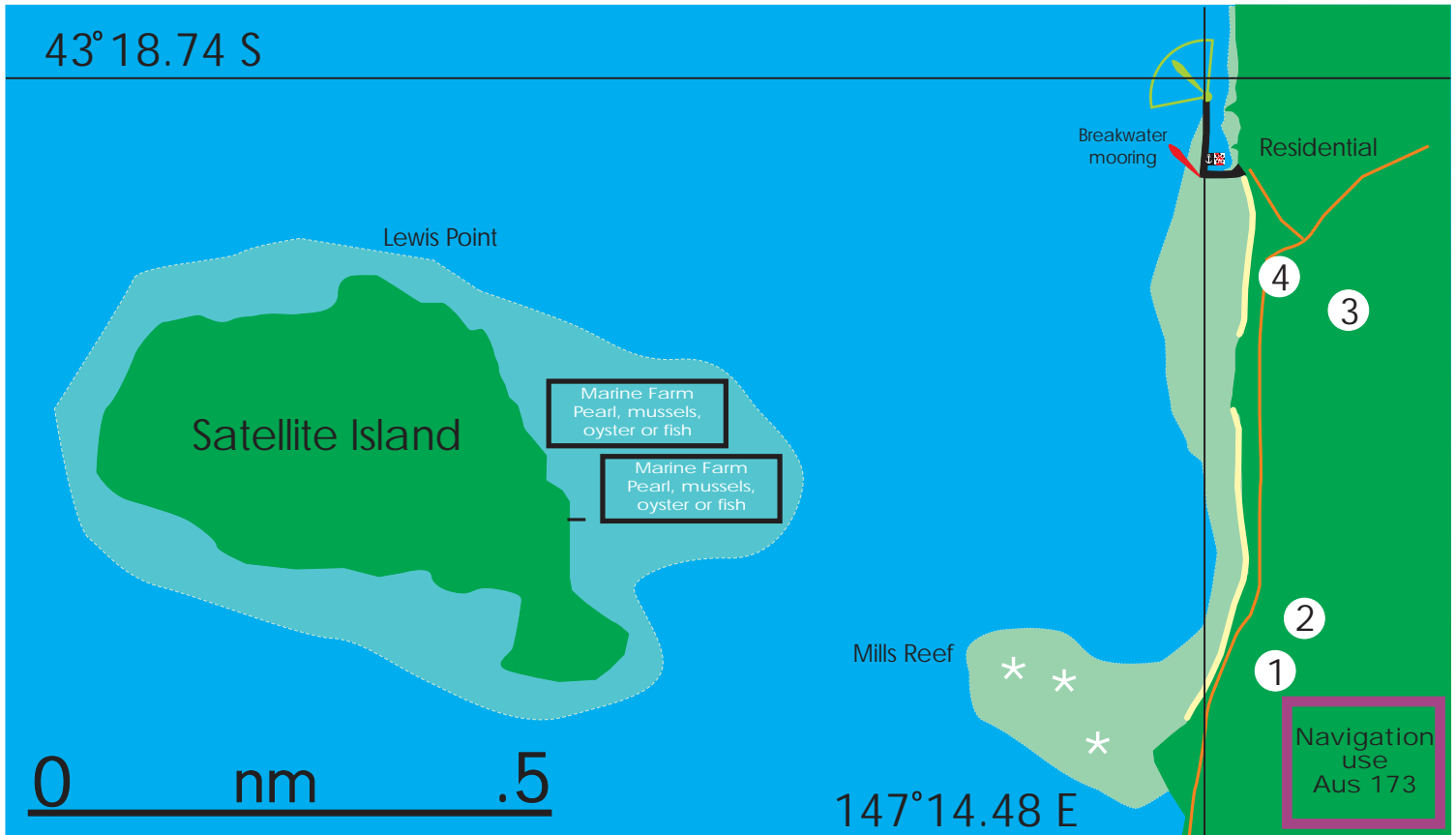


Alonnah TAS



Don't sneeze or you will miss it. Good security in this confined harbour. Take your time entering as it is small but beaut once you are in. I have marked it as an anchorage but you will have to tie to the pontoon or another boat. The massive pontoons are part of the old floating road that spanned the Derwent River. The village is spread out along the foreshore. At the south end of the beach is the Bruny Island Hotel and the convenience store is opposite. Be aware of marine farms on the eastern side of Satellite Island. 1 Bruny Island Hotel, 2 convenience store & fuel, 3 school and internet access, 4 police station. The locals are friendly and helpful.