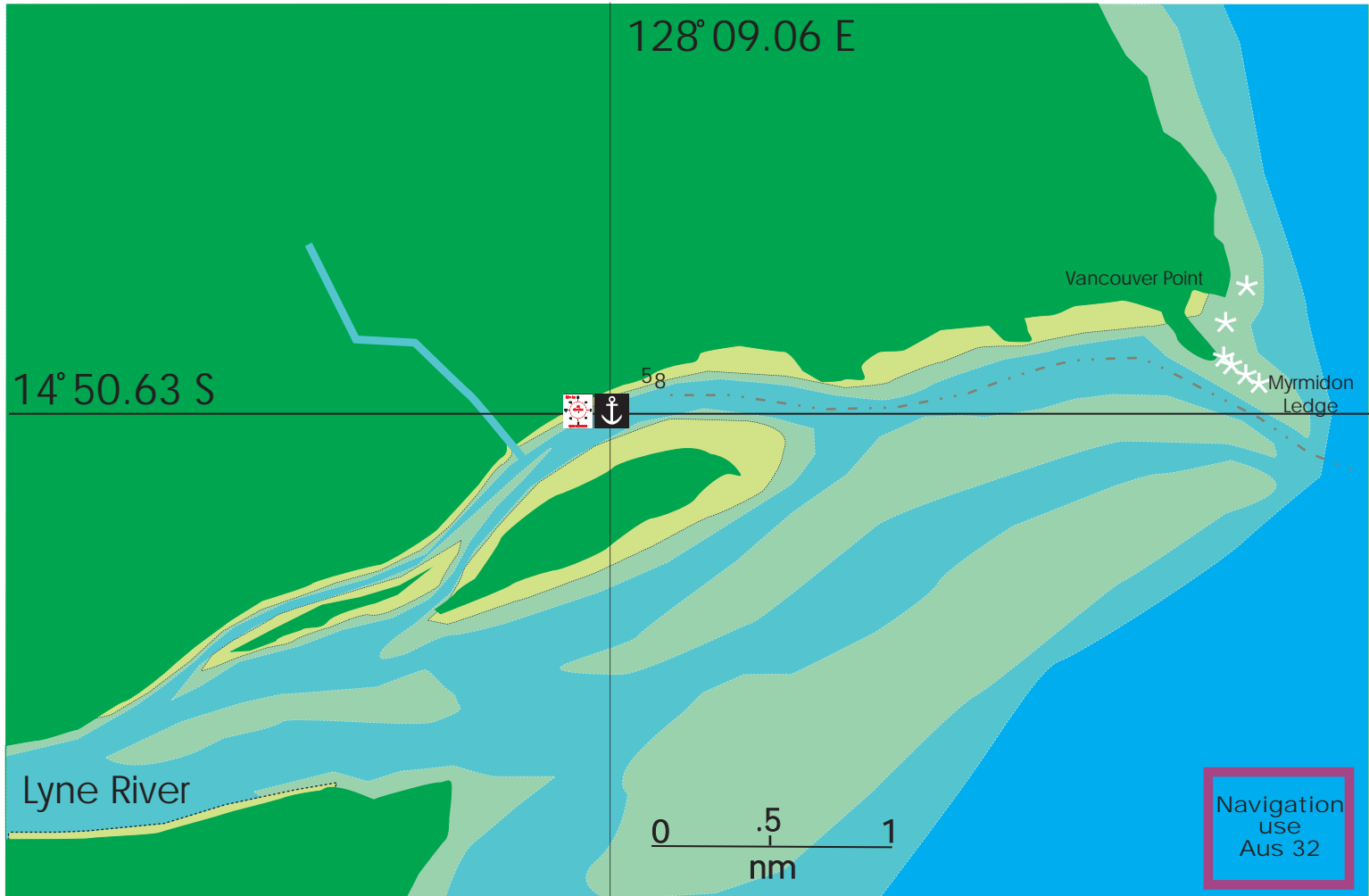
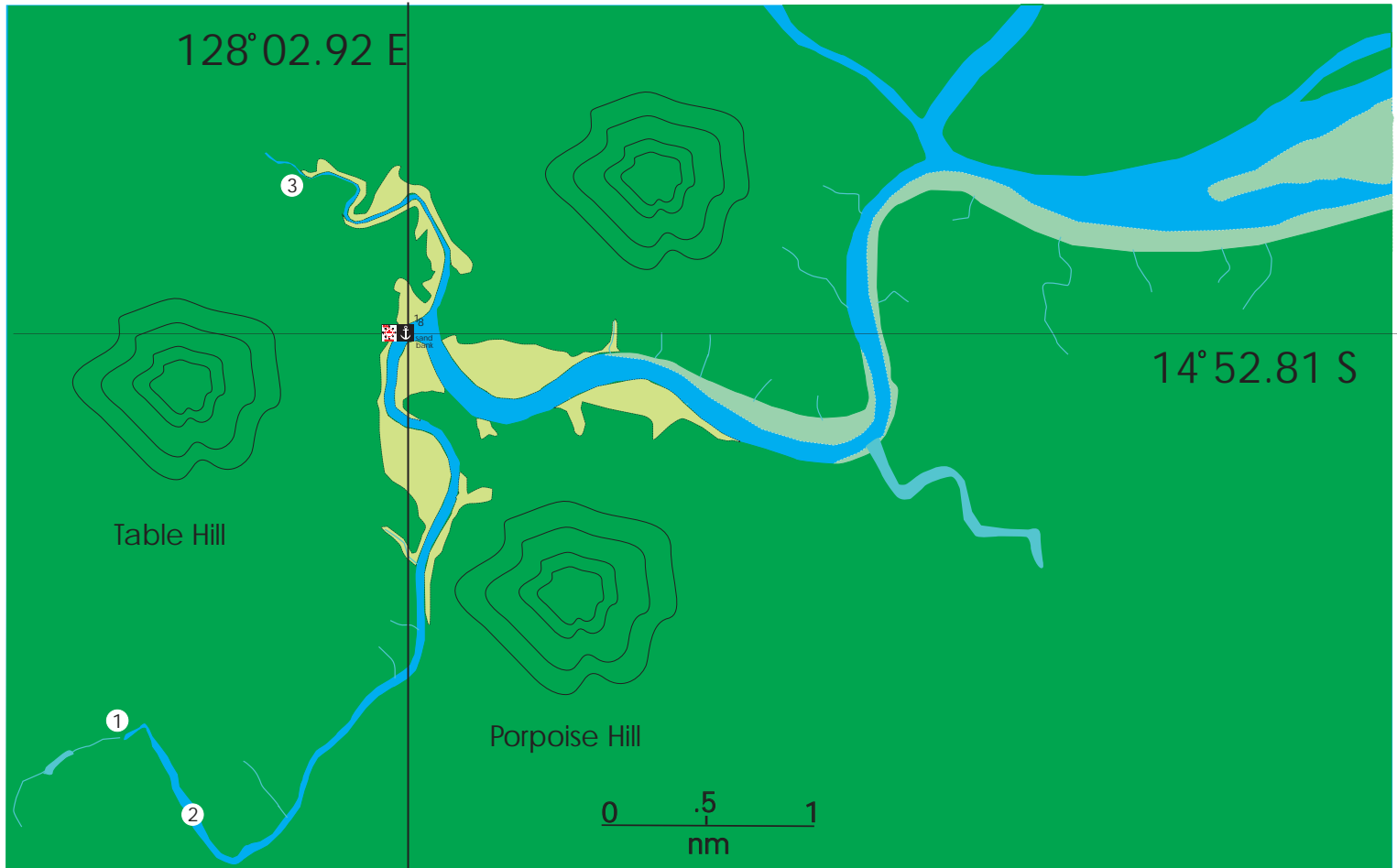


Lyne River WA (entrance)



Not as daunting as it looks because the tidal range will clear you of the mud banks. Use a making tide and tuck in close to northern shore until you are happy with your depth. There is a shallow patch near the first larger creek. The fishing is just spectacular. Page 2 will give you up-river details.

Lyne River WA



When proceeding up-stream as usual go wide at the bends and centre on straight sections. A couple of sand banks are to be negotiated so use a making tide. Plenty of water at the marked anchorage but basically anchor where tide and draft are suitable. Marker 1 is a water fall with swimming holes at the top of the falls. Marker 2 is a rock bar that has to be negotiated. Marker 3 is a fresh water stream again past a rock bar. Fishing and crabbing are excellent in this river system.